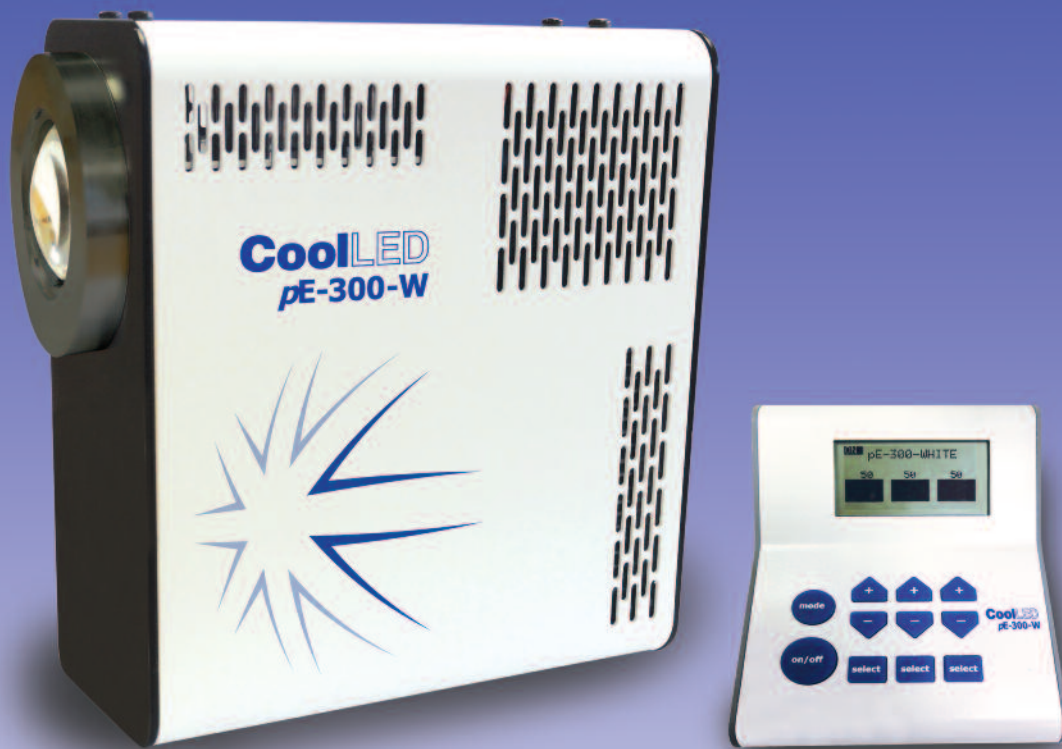


pE-300-WHITE

BROAD SPECTRUM FLUORESCENCE EXCITATION



CLEAN BRIGHT ILLUMINATION



www.CoolLED.com

CoolLED 

White Light Fluorescence Excitation Source

CoolLED pE-300-White

CoolLED's pE-300-White unit is designed to offer broad-spectrum LED illumination for general use in fluorescence applications. The unit can be fitted directly to the microscope as a better and safer alternative to a high-pressure mercury or metal-halide light source. Spectral coverage is from the UV (DAPI excitation) to the Red region (Cy5 excitation). The unit will excite common fluorophores used in hospital and research laboratory environments.

With a comprehensive range of microscope adaptors, the pE-300-White can be fitted to most current and older microscopes. The result is a safe, convenient light-source which will last for many years without any additional operating costs.



▶ SIMPLY BETTER CONTROL

The manual Control Pod offers instant on/off operation for White illumination with 0-100% intensity control in 1% steps.

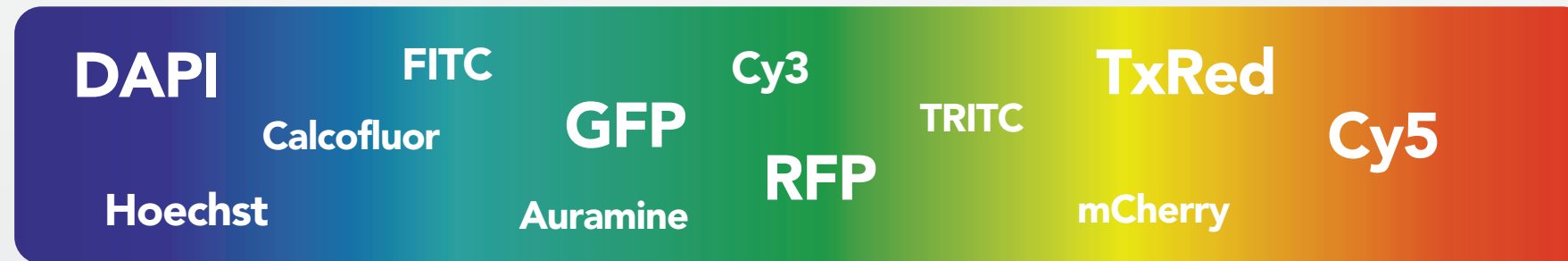
The pE-300-White is ideal for use with multi-band filter sets providing simplicity of operation with fewer filter cubes – potentially removing the need for single band filter sets altogether. It allows you to control the brightness of each fluorophore independently, in a multi-stained sample. Fluorophores can be viewed in isolation or in combination without filter cube changes.

Application example: FISH



▶ ADVANTAGES OF THE pE-300-WHITE

- Broad spectrum, high power white illumination
- Simple to fit, simple to use
- Instant On/Off
- Excellent Field of View
- No bulb replacement or aligning
- Long lifetime (25,000 operating hours)
- Reduced power consumption for energy saving
- No shutters or ND filters required
- Filter set compatibility, including DAPI
- Stable and repeatable
- Quiet operation
- Fits all new and most older microscopes
- TTL triggering
- No mercury



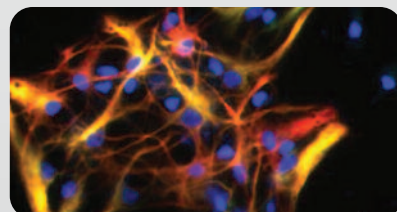
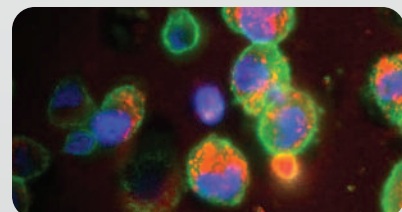
Some of the many fluorophores excited by the pE-300-White

▶ LIQUID LIGHT-GUIDE OPTION

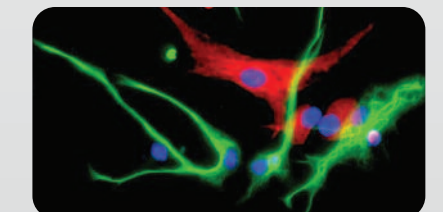
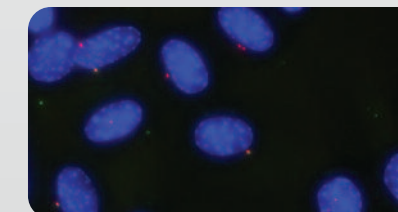
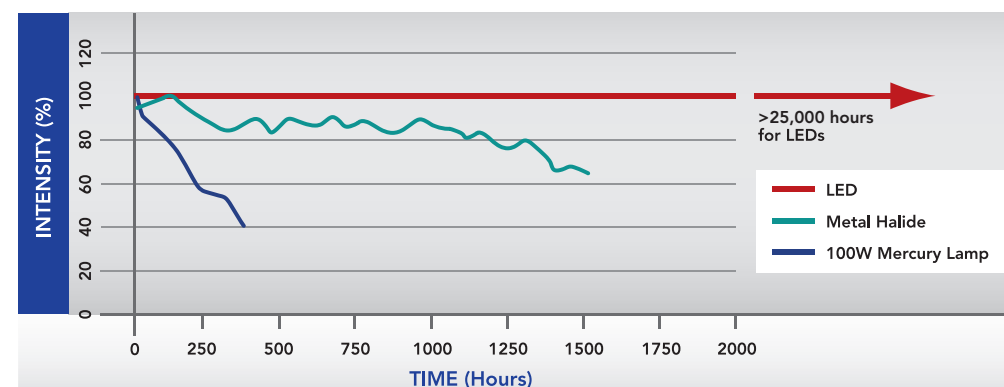
The pE-300 can be supplied with a liquid light-guide when there is a need to keep the source of illumination remote from the microscope. An optional collimating adaptor is available if required. As a replacement to a metal-halide source on a confocal microscope, it can be used for pre-aligning samples before scanning commences. This is particularly attractive as photo-bleaching of the sample can be minimised when LED illumination is used.



Left: Liquid light-guide option is perfect on a confocal microscope

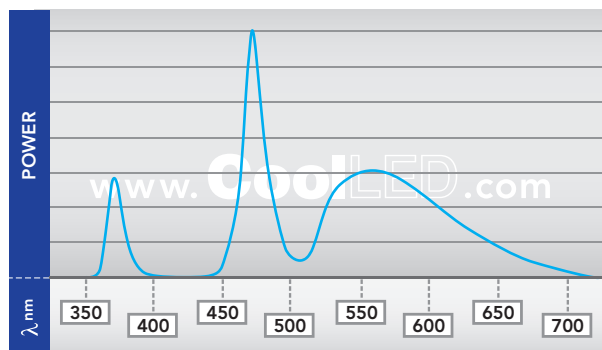


▶ COMPARATIVE LIFETIME GRAPH



SPECIFICATIONS

Performance: Typical pE-300-White Spectrum



Power values below for the unit configured to match SINGLE BAND FILTER SET applications.

UV	Blue	GYR (Green/Yellow/Red)
26.20 mW	156.40 mW	151.00 mW

Powers measured at sample plane of research grade microscope using 100% mirror in cube and 10X objectives.

Figures are typical values and represent measurements made at time of publication. CoolLED operates a policy of continuous development and values may increase in future.

For those considering using the pE-300-White with MULTI-BAND FILTER SETS, please refer to further information on the CoolLED website (<http://www.cooled.com/Life-Sciences-Analytical/Research-Products/pE-300-White/Multi-Band-Filter-Sets/>) before ordering.

CONTROL & INTERFACE

Manual: Manual Control Pod
Remote: Single TTL for on/off control. Switching speed <30uS

DIMENSIONS

Main unit: 77mm(w) x 186mm(d) x 162mm(h) – Weight 1.40kg
Control pod: 88mm(w) x 125mm(d) x 37mm(h) – Weight 0.32kg
Power Supply: 140mm(w) x 56mm(d) x 32mm(h) – Weight 0.42kg

POWER

Power requirements:
110-240Va.c. 50/60Hz, 2A

Power consumption:
Standby Max 2W
White (all 3 bands) at 100% intensity
Max 80W
2 bands at 100% intensity
Max 63W
1 band at 100% intensity
Max 38W

TO ORDER

pE-300-W-D-SB-YYY-ZZ Main unit configured for SINGLE BAND FILTER SETS, control pod, power supply, mains cable
pE-300-W-L-SB-YYY-ZZ Main unit configured to SINGLE BAND FILTER SETS, control pod, power supply and mains cable for use with 3mm liquid light guide
pE-300-W-D-MB-YYY-ZZ Main unit configured for MULTI-BAND FILTER SETS, control pod, power supply, mains cable
pE-300-W-L-MB-YYY-ZZ Main unit configured to MULTI-BAND FILTER SETS, control pod, power supply and mains cable for use with 3mm liquid light guide
pE-1904 3mm diameter, 1m long liquid light guide
pE-1908 3mm diameter, 3m long liquid light guide
pE-10400-YYY Microscope adaptor with collimating optics

To specify microscope code (YYY) see <http://www.cooled.com/Life-Sciences-Analytical/Clinical/Microscope-Adaptors/>

To specify local power cable (ZZ): 10=Australia, 20=Europe, 30=UK, 40=USA

Warranty System: 12 months, LEDs: 25,000 hours

ENVIRONMENT & SAFETY

LED products are more sustainable and energy efficient than conventional light sources. CoolLED's products have the following benefits:

- No Mercury
- Energy Efficient: 80% less power
- Long lifetime
- No bulb replacements
- Reduced risk of eye damage
- No special disposal regulations



CONTACT



Online: www.cooled.com
Phone: +44 (0) 1264 323040 (Worldwide)
1-800-877-0128 (USA + Canada)
Email: info@cooled.com

Westmarch Business Centre, River Way, Andover, SP10 1NS, UK

CoolLED